

STANDARD F 200

Flourescent Immunoassay Analyzer



STANDARD F200 provide LIS connectivity to connect the majority of existing information system in hospital. So it is good to use in hospital, clinic or small to medium size lab.

All the parameters can be randomly accessible to the STANDARD F Analyzer without any pre-procedure. The analyzer recognizes each parameter once the test device is inserted, and display graphical test procedure for the sample preparation.

SPECIFICATION	F 200
Test Method	Florescent Immunoassay (FIA)
Analysis	Quantitative/Qualitative Test
Test Capacity	1 Test
Test Mode	Standard Test, Read Only
Power	AC/DC Adapter
Display	7" Color LCD
Printer	Built-in
Connectivity	HL7 v2.6(PCD-01) / POCT1-A
Auto-ID	2D Barcode
Dimensions	200 x 240 x 205 mm
Weight	2.5 kg

Assay Principle

Flourescent Immunoassay (FIA)

Specific Antigen or Antibody

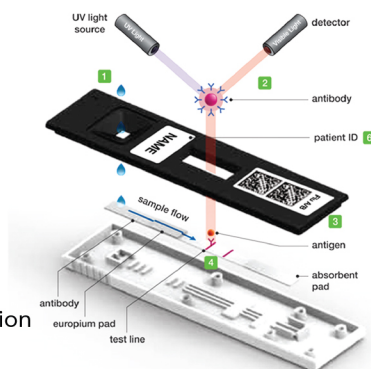
- High sensitivity and specificity
- Fast assay time
- Cost effective

Europium Bead

- Strong signals
- Excellent stability
- Minimized interface

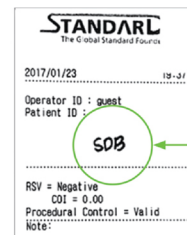
Parameter Information

- 2D barcode contains all information that needs for the test



Patient ID Printing System

A hand-written patient ID on the test device is printed with the test results for user's convenience.



Convenient process
Auto coding procedure by recognizing 2d barcode

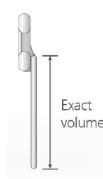
Overview of STANDARD F 200 Analyzer

Convenient Report
Built-in printer

User friendly interface
7" Color Touch Screen

Minimized Risk of Contamination
Keep the entrance shut unless the testing is in progress. The dust cover protects against contamination.

Accurate Result
Take an accurate collection with fixed volume dropper



Reliable result



Calibration Set



Control Bead



Control Swab

Provide Calibration set and Control reagent having more confidence in the result.

TruLaboratories Corporation

14 Egea St., Cubao, Quezon City
+632 82-TRULAB (878522)
+632 8287.3683
+63917.878.2288 • +63925.878.2288
www.trulaboratories.com

STANDARD F Analyzers are qualitative and quantitative fluorescent immunoassay systems and have been designed for easy and reliable measuring of diverse parameters. Rapid, highly accurate and reliable results help you to reduce uncertainty of treatment and make better the quality of patients care.

STANDARD F 2400

Flourescent Immunoassay Analyzer

STANDARD F2400 is fluorescent immunoassay systems and have been designed for easy and reliable measuring of diverse items. STANDARD F2400 provide LIS connectivity to connect the majority of existing information system in hospital. So it is good to use in hospital, clinic or small to medium size lab.

All the parameters can be randomly accessible to the STANDARD F Analyzer without any pre-procedure. The analyzer recognizes each parameter once the test device is inserted, and display graphical test procedure for the sample preparation.



SPECIFICATION	F 2400
Test Method	Florescent Immunoassay (FIA)
Analysis	Quantitative/Qualitative Test
Test Capacity	70 Tests per Hour
Number of Memories	5,000 (Run Test)
Test Mode	Standard Test
Power	AC/DC Adapter
Display	10.1" Color TFT LCD (1024 X 600)
Display Control	Graphic User interface
Printer	Built-in
Connectivity	HL7 v2.6(PCD-01) / POCT1-A
Real Time Clock	Including RTC Back up Battery
Auto-ID	2D Barcode
Dimensions	510 x 566 x 297 mm
Weight	20.0 kg

Assay Principle

Flourescent Immunoassay (FIA)

Specific Antigen or Antibody

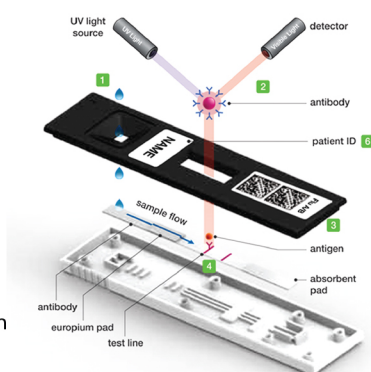
- High sensitivity and specificity
- Fast assay time
- Cost effective

Europium Bead

- Strong signals
- Excellent stability
- Minimized interface

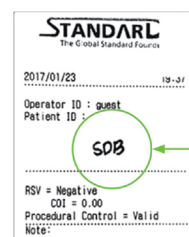
Parameter Information

- 2D barcode contains all information that needs for the test



Patient ID Printing System

A hand-written patient ID on the test device is printed with the test results for user's convenience.



Convenient process
Auto coding procedure by recognizing 2d barcode

Overview of STANDARD F 2400 Analyzer



Color TFT LCD

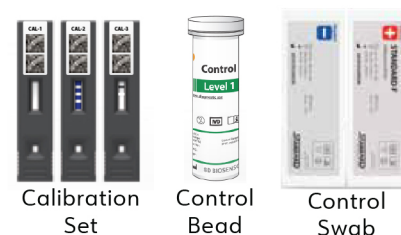
Inlet for Insertion of Test Device
Test device outlet



Printer Cover
Printer Cover Open Button

Mini USB
LAN
AC Power Connection

Power Switch
USB x 4
Additional Device Connection Part

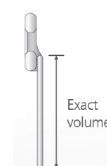


Reliable result

Provide Calibration set and Control reagent having more confidence in the result.

Accurate Result

Take an accurate collection with fixed volume dropper



14 Egea St., Cubao, Quezon City
+632 82-TRULAB (878522)
+632 8287.3683
+63917.878.2288 • +63925.878.2288
www.trulaboratories.com

STANDARD F Analyzers are qualitative and quantitative fluorescent immunoassay systems and have been designed for easy and reliable measuring of diverse parameters. Rapid, highly accurate and reliable results help you to reduce uncertainty of treatment and make better the quality of patients care.