

# STANDARD F CK-MB FIA SD BIOSENSOR

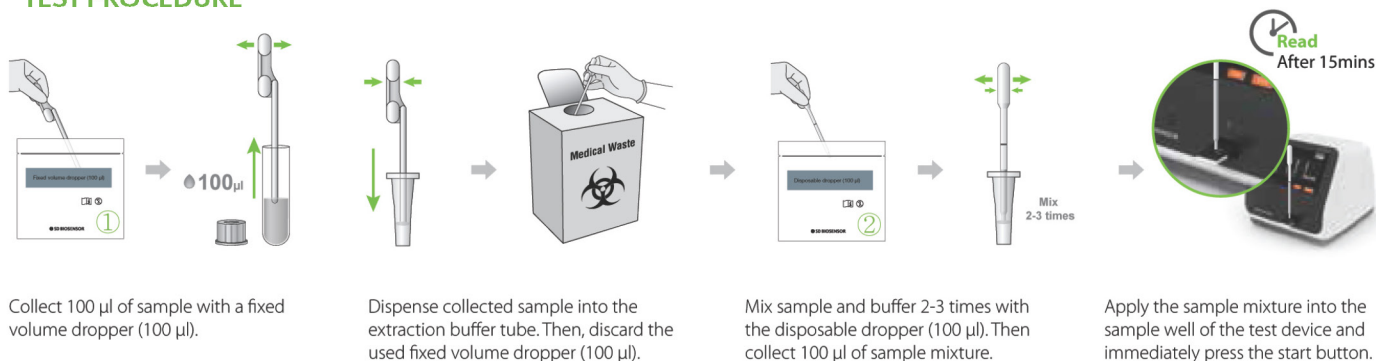
STANDARD F CK-MB FIA performs quantitative measurement of Creatine Kinase MB (CK-MB) level in plasma and whole blood samples using fluorescence immunoassay. Through the STANDARD F Analyzer, test results with high sensitivity and specificity can be obtained.

- CK-MB is a cardiac marker for the diagnosis of myocardial infarction
- Automatic strip recognition by reading the information stored in 2D barcode
- Reagents can be stored at room temperature : 2-30°C / 36-86°F
- Plasma and Whole blood samples available



Specification	
Intended use	Quantitative measurement of CK-MB level for diagnosis of AMI
Specimen type	Whole blood (EDTA), Serum
Specimen volume	100 µl
Measuring Range	1 - 200ng/mL
Reference Range	<5.0 ng/ml
Testing Time	10 mins.
Storage Condition	2 - 30°C / 36 - 86°F

## TEST PROCEDURE



Collect 100 µl of sample with a fixed volume dropper (100 µl).

Dispense collected sample into the extraction buffer tube. Then, discard the used fixed volume dropper (100 µl).

Mix sample and buffer 2-3 times with the disposable dropper (100 µl). Then collect 100 µl of sample mixture.

Apply the sample mixture into the sample well of the test device and immediately press the start button.

## METHOD COMPARISON

Reference method vs STANDARD F CK-MB FIA	
Correlation with Roche Cobas	$y=0.9937x - 0.047; r=0.9973; n=210$
CV%	QCL=6.0% / QCM=6.3% / QCH=7.0%
Differ (%)	Within 15%

## ORDERING INFORMATION

Category	Product	Pack Size
Cardiovascular	STANDARD F CK-MB FIA	20 Test
	STANDARD F CK-MB Control	Lv1 x 10 / Lv2 x 10