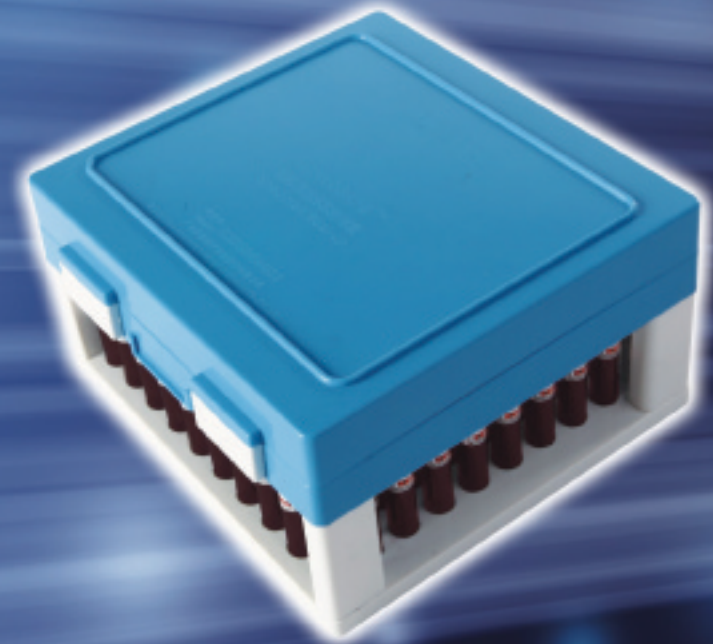


Laboratory Safety and Quality Control have been hot topics in recent years...

IMPROSAFE™ SPECIMEN SEAL-UP

For blood specimen post-processing in laboratory



A safe
solution for
blood specimen
post-
processing

Safe



Convenient

Simple
and easy
operation
brings you
better
experience

Efficient

A time-
saving
solution helps
you create
more value

Standardized

An effective
solution helps
your laboratory
meet the
requirements of
ISO 15189/ISO
15190